

# DUAL PLATE WAFER CHECK VALVE

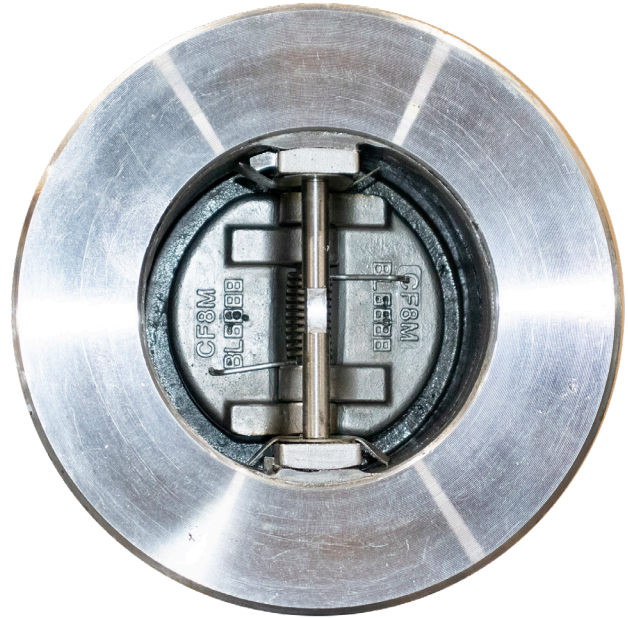
*DCW Series*

# DUAL PLATE WAFER CHECK VALVE



## STANDARDS

- API 594 Design
- CSA Z245.15-22 Design
- API 598 Testing & Inspection
- ASME B16.34, Pressure-Temperature
- NACE MR0175/ISO 15156, MR0103
- API 6FD Fire Safe Design
- API B16.5 Ends Flanged
- Flat-Faced with 125-250 AARH Finish
- API 594 Face-to-Face Dimensions



## SPECIFICATIONS

- ASME CL 150, 300, 600, Sizes 2" – 8"
- ASME CL 900, 1500 Sizes 2" – 4"
- Available in Carbon Steel, Low Temp Carbon Steel, and Stainless Steel
- Stainless steel trim standard (wetted parts)
- Retainerless Design
- Spring Assisted
- Full Port Design
- All Bodies are overlaid with Stellite 6 (seating surfaces)
- Metal to Metal Seal
- Our Retainerless design does not have any holes passing through the body of the valve. In applications where very hazardous or corrosive gases or liquids are passing through the valve, a Retainerless design may be preferable to minimize the chance that any leakage can escape through holes in the valve body.
- Suitable for horizontal or vertical (flow up) applications, for vertical installations, only install with the arrow mark on the body pointing in an upward direction.



# HOW TO ORDER GUIDE



## EXAMPLE:

A 8" CL150, LCC T12 NACE, METAL SEAL, FLAT FACED. is written as: 801DCWL5MF

A	B	C	D	E	F	G
8	01	DCW	L	5	M	F

A	Size
2	2"
3	3"
4	4"
6	6"
8	8"

B	Pressure Class
01	150
03	300
06	600
09	900
15	1500

C	Valve Type
DCW	Dual Plate Wafer Check Valve

D	Body Material
C	ASTM A216 WCB + Stellite 6 Faced
L	ASTM A352 LCC + Stellite 6 Faced
S	ASTM A351 CF8M + Stellite 6 Faced

E	Trim (Wetted Parts)
4	(API T8N) A217 CA15 Disc & Holders, A276 410 Hinge Pin & Stop Pin
5	(API T12N) A351 CF8M Discs & Holders, A276 316 Hinge Pin & Stop Pin

F	Seal
M	Metal

G	End Connection
F	Flat Faced- 125-250 AARH Finish



# ENGINEERING DATA

## Dimensions, Weights, Cv



CLASS 150 - DIMENSIONS (IN)							
Size	ØD	ØD2	ØD3	L	Weight (LB)	Cv	Cracking Pressure (PSI)
2"	4.06	1.89	2.68	2.38	7	67	0.2
3"	5.31	2.64	3.46	2.88	11	134	0.2
4"	6.81	3.62	4.57	2.88	18	319	0.2
6"	8.70	5.51	6.61	3.88	31	787	0.1
8"	10.94	7.20	8.43	5.00	57	1392	0.1

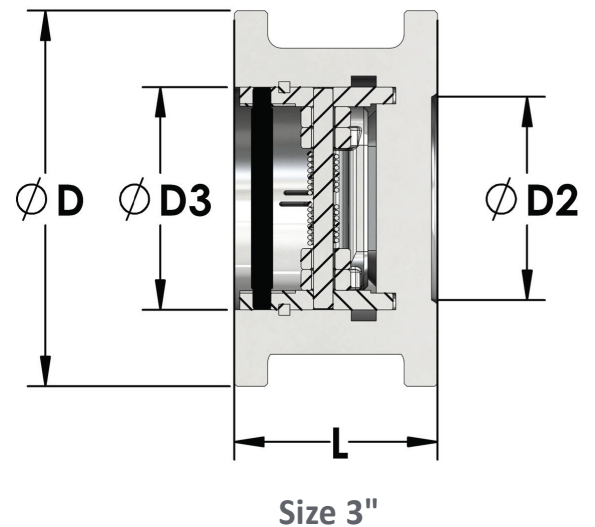
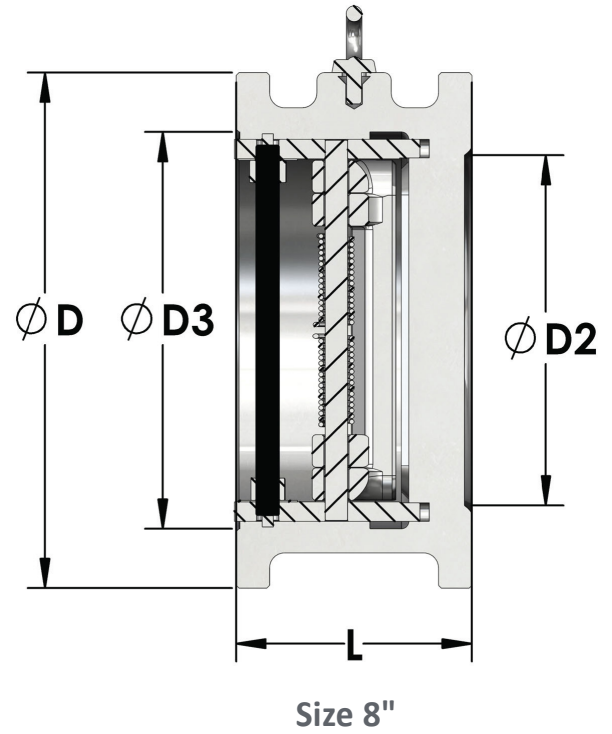
CLASS 300 - DIMENSIONS (IN)							
Size	ØD	ØD2	ØD3	L	Weight (LB)	Cv	Cracking Pressure (PSI)
2"	4.33	1.89	2.68	2.38	7	67	0.2
3"	5.83	2.64	3.46	2.88	13	134	0.2
4"	7.09	3.62	4.57	2.88	18	319	0.2
6"	9.80	5.51	6.61	3.88	40	787	0.1
8"	12.05	7.20	8.43	5.00	68	1392	0.1

CLASS 600 - DIMENSIONS (IN)							
Size	ØD	ØD2	ØD3	L	Weight (LB)	Cv	Cracking Pressure (PSI)
2"	4.33	1.89	2.68	2.38	7	67	0.2
3"	5.83	2.64	3.46	2.88	13	134	0.2
4"	7.56	3.62	4.57	3.12	24	319	0.2
6"	10.39	5.51	6.61	5.38	68	787	0.1
8"	12.56	7.09	8.43	6.50	117	1392	0.1

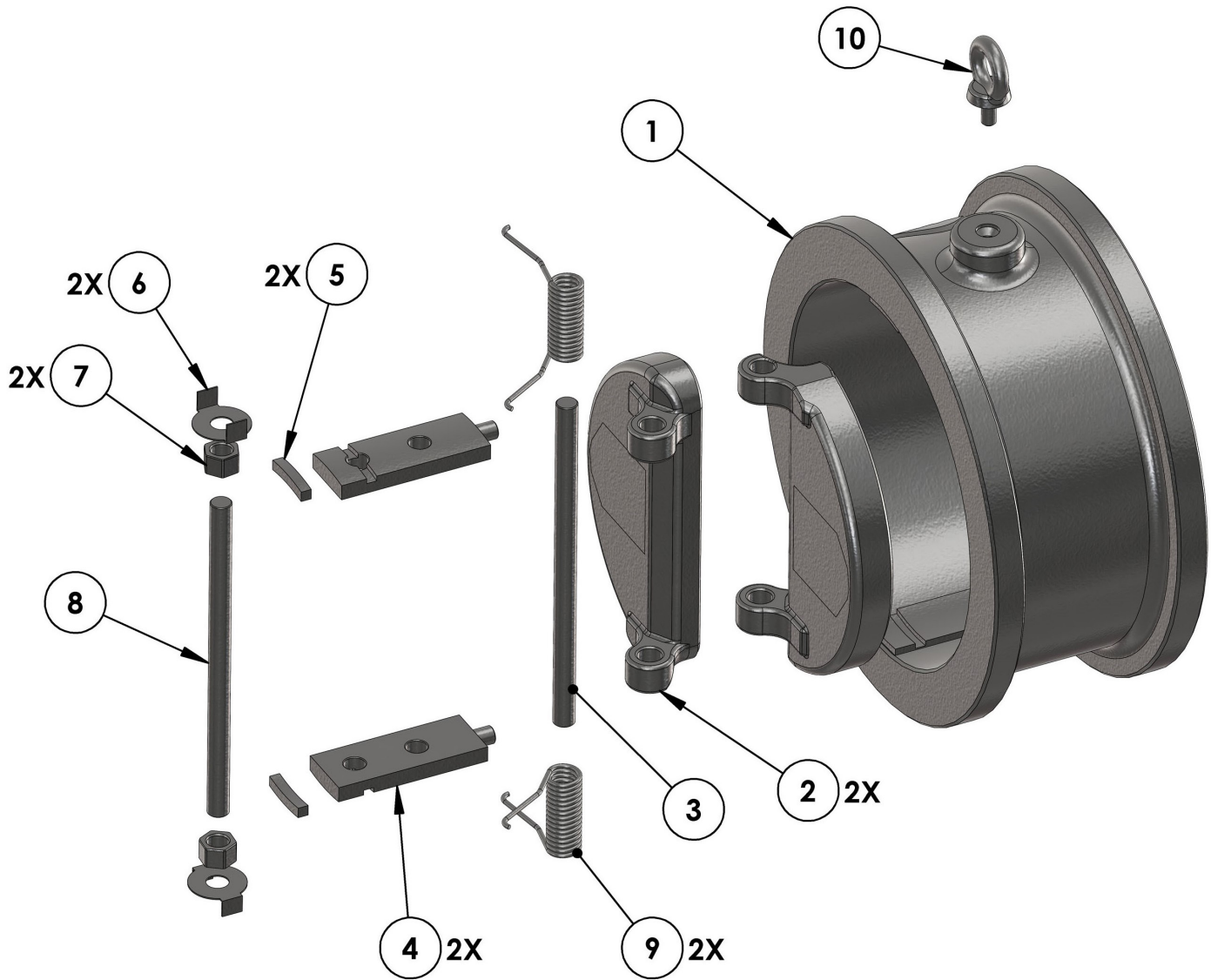
CLASS 900 - DIMENSIONS (IN)							
Size	ØD	ØD2	ØD3	L	Weight (LB)	Cv	Cracking Pressure (PSI)
2"	5.59	1.89	2.83	2.75	7	67	0.2
3"	6.61	2.44	3.46	3.25	22	115	0.2
4"	8.11	3.54	4.57	4.00	44	306	0.2

CLASS 1500 - DIMENSIONS (IN)							
Size	ØD	ØD2	ØD3	L	Weight (LB)	Cv	Cracking Pressure (PSI)
2"	5.59	1.89	2.83	2.75	7	67	0.2
3"	6.69	2.44	3.46	3.25	26	115	0.2
4"	8.27	3.54	4.57	4.00	49	306	0.2

MATERIAL TEMPERATURE LIMITS						
MATERIAL	SPECIFICATION	FAHRENHEIT (°F)		CELSIUS (°C)		
		MIN.	MAX.	MIN.	MAX.	
BODY	Carbon Steel	ASTM A216 WCB	-20	800	-29	427
	Low Temp Carbon Steel	ASTM A352 LCC	-50	650	-46	343
	Stainless Steel	ASTM A351 CF8M	-425	1500	-254	816



# MATERIAL OF CONSTRUCTION



Materials of Construction				
Item #	Part Name	Carbon Steel	Low Temperature Carbon Steel	Stainless Steel
1	Body	ASTM A216 WCB+STELLITE 6 FACED	ASTM A352 LCC+STELLITE 6 FACED	ASTM A351 CF8M+STELLITE 6 FACED
2	Disc	A217 CA15	ASTM A351 CF8M	ASTM A351 CF8M
3	Hinge Pin	ASTM A276 410	ASTM A276 316	ASTM A276 316
4	Holder	A217 CA15	ASTM A276 316	ASTM A276 316
5	Key	ASTM A276 316	ASTM A276 316	ASTM A276 316
6	Clip	316SS	316SS	316SS
7	Nut	ASTM A194 8M	ASTM A194 8M	ASTM A194 8M
8	Stop Pin	ASTM A276 410	ASTM A276 316	ASTM A276 316
9	Spring	INCONEL X-750	INCONEL X-750	INCONEL X-750
10	Eye Bolt*	AISI 1020	AISI 1020	316SS

\* Eye Bolt offered in CL150 & CL300 8" & larger, CL600, CL900, CL1500 6" & larger



# SERVICE CAPABILITIES

## Trusted Partner. Reliable Solutions.

Our extensive product and application expertise allows us to be more than just a supplier. Our customers view us as the people they trust to integrate flow controls with their equipment and ensure the successful achievement of their project goals. Our increased involvement with a diverse range of projects, spanning an array of industries provides us with a multitude of references for successful integration.

### PEOPLE

- Product and Application Know-How
- Technically Trained Sales Staff
- Exceptional Customer Service

### PRODUCTS

- Ball, Butterfly, Check, Gate, Needle, Globe and Plug Valves, Adapters, Fittings, Gaskets, Joints, Couplings, Seals and Hammer Unions
- Product Leadership—Quality, Reliable and Innovative Products
- Replacement and Spare Parts
- ISO 9001:2015 Certified Organization

### SERVICES

- Distribution Network Located throughout North, Central, and South America
- Customer Specific Labeling and Packaging
- Strategic Account Partnerships
- Express Delivery
- Quality and Materials Assurance
- Valve Customization and Automation

## Valve Quality Development Team

Before the decision is made to brand a product C&C, our Valve Quality Development Team conducts comprehensive manufacturers audits and inspections on both the product and the manufacturer's production and testing process. These stringent audits and inspections ensure the manufacturer's ability to produce and provide products of consistent quality demanded by our customers and in accordance with documented procedures. Once manufacturers are qualified, the VQDT performs onsite witnessing and inspections of the product prior to releasing it for shipment. This added capability and oversight differentiates us from other suppliers.



API 6D Pressure Test Capability

Reports providing proof of quality and testing are available to our customers. Additional tests can be provided upon request.

- Positive Material Identification
- Material Test Reports
- Non-Destructive Testing
- Quality and Technical Documentation
- Supplementary Testing per Customer Requirements



Proof of Product Quality and Compliance



# About Our Company



CNC Flow Control is headquartered in Houston, Texas with multiple other locations in the U.S. and Canada. Our company unifies several trusted valve and flow line brands that have been serving numerous industries in North America for nearly three decades. From long range projects to same-day delivery, our diverse team is dedicated to understanding customers' needs in order to ensure exceptional service and the best solutions. Our extensive product portfolio ranges from commodity products like hammer unions and needle valves, to highly engineered products like API 6D trunnion mounted ball valves.



Quality assurance is critical to CNC Flow Control's process and we hold multiple internationally recognized quality standards certifications and management system. We are dedicated to understanding our customers' needs to ensure exceptional service by offering an in-house engineering and product management team, an extremely large product portfolio and extensive inventory to support same day shipments.

**Headquarters - U.S.**  
10350 Clay Road, Suite 250  
Houston, TX 77041  
Toll-Free: 844.398.6449

**Headquarters - Canada**  
2930 51 Avenue NW, Unit # 3  
Edmonton, AB T6P 0E1  
Phone: 780.462.9166

***Multiple other branch locations throughout the U.S. and Canada.***

**Website:** [www.cncflowcontrol.com](http://www.cncflowcontrol.com)



**Follow us:**

