

# OILFIELD SOLUTIONS

Valves, Fittings & Flowline

# ENCF

FLOW CONTROL



CNC Flow Control holds exclusive rights for FORCE in North America and our in-house quality team performs pressure testing before shipments. FORCE valves are manufactured in South Korea with strict accordance to all applicable ASME and API standards. CNC Flow Control maintains a large inventory of carbon steel and stainless steel configurations.

### Floating Ball Valves

**FORCE Floating Ball Valves** are designed to API 6D and offered as highly customizable one piece or two piece bolted body designs. Available materials consist of carbon steel, low temperature carbon steel, stainless steel, special alloys, monel, and inonel with available sizes between 1/2" - 12" and ASME Class 150 to 1500.



Force BF Series

- Two piece bolted body design
- Large carbon & stainless inventory
- Full & reduced port
- Metal seated design available
- Firesafe and API 6D compliant
- API 641 low fugitive emissions Certified

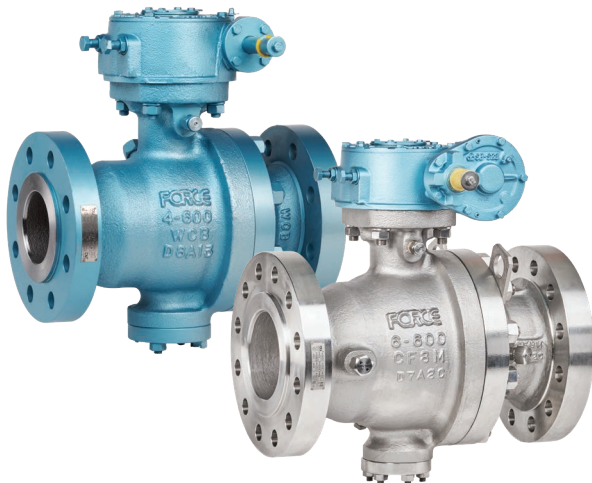


Force BU Series

- One piece unibody design
- Large carbon & stainless inventory
- Reduced port in CL 150 & CL 300
- Metal seated design available
- Firesafe and API 6D compliant
- API 641 low fugitive emissions Certified

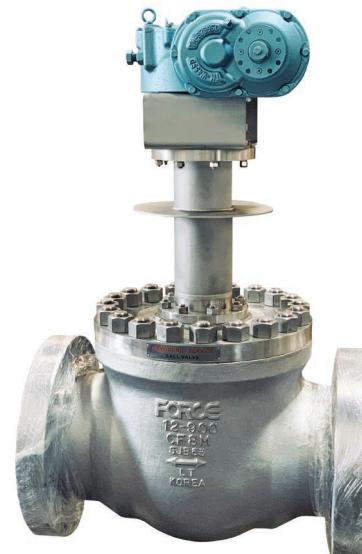
### Trunnion Mounted Ball Valves

**FORCE Trunnion Mounted Ball Valves** are designed to API 6D and offered as highly customizable one piece or two piece bolted body designs. Available materials consist of carbon steel, low temperature carbon steel, stainless steel, special alloys, monel, and inonel with available sizes between 2" - 16" and ASME Class 150 to 2500.



Force BTN Series

- Two piece bolted body design
- Large carbon & stainless inventory
- Metal seated design available
- Firesafe and API 6D compliant
- API 641 low fugitive emissions Certified



Force BFC Series (Cryogenic)

- Integral flanged ends
- Top entry design
- Full & reduced port available
- Firesafe, API 6D, & MSS SP-134 compliant
- Tested per API 598 & BS 6364





# C&C Valves

C&C's extensive product portfolio is extremely diverse and can be found in numerous industries in North America. From commodity products to highly engineered products, C&C has provided the market with quality valves and fittings for nearly three decades.

## API 6D Valves

**C&C API 6D valves** are designed to exceed industry standards by maintaining certifications such as API 6D, API 607, API 641, and ASTM B16.34. Available materials consist of carbon steel, low temperature carbon steel, and stainless steel, with available sizes between 2" - 48" and ASME Class 150 to 2500.



**Trident Series**

3-pc Forged Trunnion Mounted Ball Valves (API 641 Certified)



**Atlas Trunnion Series**

2-pc Cast Trunnion Mounted Ball Valves (API 641 Certified)



**Atlas Floater Series**

2-pc Cast Floating Ball Valves (API 641 Certified)



**CVA Series**

Cast Steel Swing Check Valves



**Guardian Series**

Cast Steel Piston Check Valves



**TWCV Series**

Thin Wafer Check Valves

## Threaded, Grooved, and Flanged Valves

**C&C threaded, grooved, and flanged end valves** consists of multiple configurations of gate, globe, check, and ball valves. Available materials consist of carbon steel, low temperature carbon steel, stainless steel, brass, and ductile iron, with available sizes between 1/4" - 12" and pressures ranging from 200 psi to 6,000 psi and ASME Class 150 to 600.

### Swing Check Valves



Stainless Steel



Carbon Steel



Ductile Iron

### Ball Valves

#### 1 Piece Design



#### 2 Piece Design



#### 3 Piece Design



### Cast Steel Valves



## Butterfly Valves

**C&C butterfly valves** are available in carbon steel, stainless steel, and ductile iron, with available sizes between 2" - 24" and pressures ranging from 150 psi to 1,480 psi. Typical applications include irrigation, cooling water, air service, fire protection, HVAC, oil and gas, slurry services, compressed air & gas, and wastewater.



Lug Style



Wafer Style



Grooved End



Threaded End



# C&C Valves & Fittings

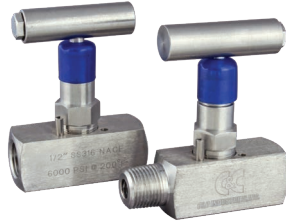
C&C's extensive product portfolio is extremely diverse and can be found in numerous industries in North America. From commodity products to highly engineered products, C&C has provided the market with quality valves and fittings for nearly three decades.

## Instrumentation Valves

**C&C instrumentation valves** are designed to provide precision and reliability for measurement and flow control applications. Available materials consist of carbon steel and stainless steel, with available sizes between 1/8" - 2" and pressures ranging from 1,500 psi to 10,000 psi.



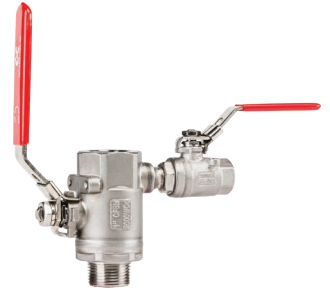
Angle Needle Valves



Needle Valves  
\*Mini needle valves also available



In-Line Check Valves



Isolator Valves

## Brass Valves

**C&C brass valves** consists of multiple configurations of ball valves, check valves, and gate valves. This material is ideal for a variety of media and are highly resistant to corrosion. Available sizes between 3/8" - 4" and pressures ranging from 200 psi to 600 psi.

### Swing Check Valves



O-Ring Style  
Threaded End  
200 psi



Metal Seated  
Threaded End  
300 psi

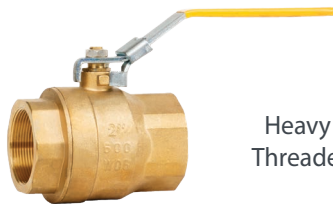


Grooved End

### Ball Valves



Threaded End



Heavy Duty  
Threaded End

### Gate Valves



Threaded End



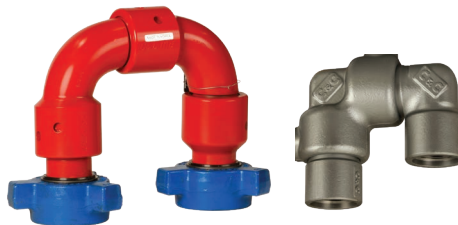
Quick-Open  
Threaded End

## Flowline (Red Iron)

**C&C Flowline (Red Iron)** products are designed to accommodate the well servicing segment of the oil & gas industry. Multiple end connection configurations and sizes are available.



Low Torque Plug Valves



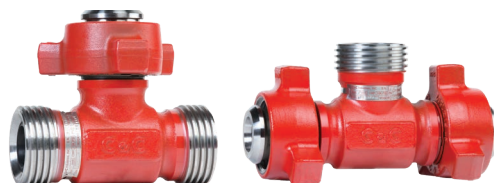
Swivel Joints



Crossovers



Ells



Tees



Crosses



# C&C General Products & Actuation

C&C's extensive product portfolio is extremely diverse and can be found in numerous industries in North America. From commodity products to highly engineered products, C&C has provided the market with quality valves and fittings for nearly three decades.

## Hammer Unions

**C&C hammer unions** are designed as heavy duty flow line connectors. Available sizes between 0.5" - 12" and pressures ranging from 1,000 psi to 15,000 psi. Contact CNC Flow Control for NACE offering.



Figure 100



Figure 110



Figure 200



Figure 201



Figure 26H



Figure 206



Figure 207



Figure 211



Figure 300



Figure 301



Figure 400



Figure 602



Figure 607(CGC)



Figure 1002



Figure 1003



Figure 1502

## Connections & Fittings

**C&C connections & fittings** consist of many different product types to serve multiple industries. Each product type is available in a wide range of sizes, pressure classes, and materials.



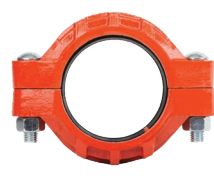
Bull Plugs



Expansion Joints



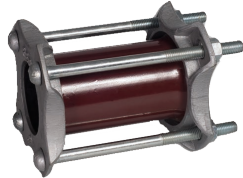
Flange Adapters



Grooved Coupling Bolt Style



Pipe Nipples



Sleeve Couplings



Swage Nipples



Grooved Coupling Hinged Style

## Actuation

**C&C pneumatic actuators** are ideal for actuating butterfly valves, ball valves, and plug valves. They are affordable and install easily on our C&C valves due to the standard ISO 5211 direct mounting pad. Available sizes between 2" - 12" and larger sizes are made to order.



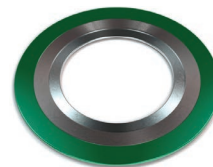
Pneumatic Double Acting Actuator



Pneumatic Spring Return Actuator

## Gaskets

Our high integrity **spiral wound gaskets** offer high compressibility and recovery, which can be used in a wide variety of media. Available sizes between 1/2" - 24" and ASME Class 150 to 2500.



Spiral Wound Gasket SRI Type



Spiral Wound Gasket SR Type



# About Our Company



CNC Flow Control unifies the trusted brands of C&C and FORCE by serving numerous industries in North America for **nearly three decades**. To better support their customer base, CNC Flow Control has opened branch locations throughout the U.S. and Canada, maintains multiple internationally recognized quality standards certifications, and sells their products **exclusively through distribution channels**.

The **in-house Engineering and Product Development teams** focus on quality assurance and ensuring that all products remain in compliance with current industry specifications. By combining the assessment of customer and industry needs with a **culture of continuous improvement**, CNC Flow Control works diligently to development new product lines to an already robust product portfolio.



CNC Flow Control's extensive product portfolio ranges from commodity products, such as hammer unions and needle valves, to highly engineered products like API 6D trunnion mounted ball valves. The high levels of inventory maintained at each branch location help ensure customer needs are reliably met. From long range projects to **same-day delivery**, CNC Flow Control's skilled team is dedicated to understanding customers' needs while delivering the **best solutions with exceptional service**.

## Headquarters - U.S.

10350 Clay Road, Suite 250  
Houston, TX 77041  
Toll-Free: 844.398.6449

## Headquarters - Canada

2930 51 Avenue NW, Unit # 3  
Edmonton, AB T6P 0E1  
Phone: 780.462.9166

***Multiple other branch locations throughout the U.S. and Canada.***

Website: [www.cncflowcontrol.com](http://www.cncflowcontrol.com)



Follow us:

