



LOW TORQUE PLUG VALVES

Our C&C branded Low Torque Plug Valves are built to meet and exceed the industry's most stringent requirements in high pressure and erosive service conditions. They are constructed of high strength forged alloy steel bodies and abrasion resistant plug inserts. This ensures not only reliability, but also durability.

Our plug valve parts are fully interchangeable with most well-known manufacturers and can be integrated into existing systems. All C&C plug valves are made in compliance with API 6A and ISO 9001. They are easy to operate and maintain, and competitively priced to position themselves among the most desirable quarter turn high performance valves in the world.

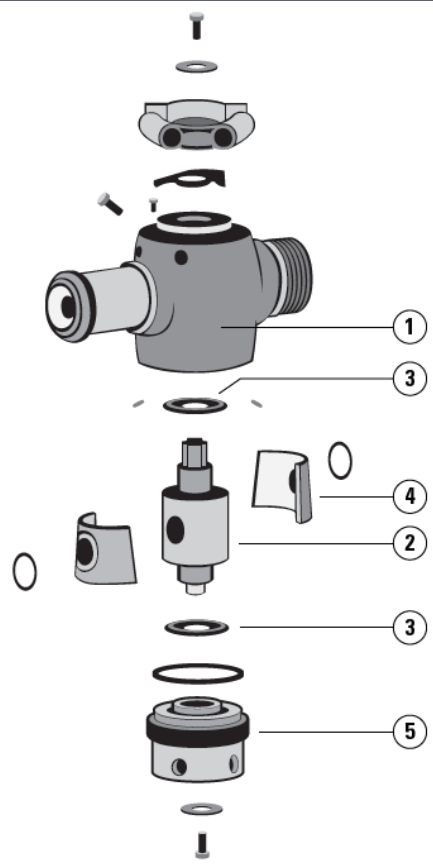


Advantages

- Designed to positively shut off or open fully
- Minimum space requirement
- Low pressure drop across the valve
- Balanced to reduce operating torque
- Phosphate Coating
- High Frequency Induction (HFI)
- Spare parts in stock



- 1 Valve Body**
4140 Forged Low Alloy Steel
- 2 Plug**
4140 Forged Low Alloy Steel + HFI (STD)
17-4 PH Stainless Steel (NACE)
- 3 Plug Seals**
Buna-N with Brass Backing (STD)
HNBR-90 with Stainless Steel Backing (NACE)
- 4 Inserts**
Ductile Iron A395, Phosphate Coated (STD)
Aluminum Bronze (NACE)
- 5 Adjusting Nut**
4140 Forged Low Alloy Steel



Drawing Number	Component	Qty	Valve Size and Part Number				
			Figure 1				Figure 2
			1"	2"	2" NACE	3"	3" Gear Op
2	Plug	1	BH0024	BH0024	BH0070	BH0056	BH0056
3	Insert Set	1	BH0027	BH0027	BH0049	BH0068	BH0068
5, 6, 8	Seal Kit	1	BH0067	BH0067	BH0068	BH0066	BH0066
11	Stop Collar	1	BH0061	BH0061	BH0061	BH0061	N/A
12	Handle Adapter	1	BH0062	BH0062	BH0062	BH0062	N/A
14	Roll Pin	2	BH0003	BH0003	BH0003	BH0003	BH0003
N/A	Repair Kit	1	BH0228-KIT	BH0228-KIT	BH0230-KIT	BH0229-KIT	BH0229-KIT
N/A	Grease Fitting	1	BH0226	BH0226	BH0226	BH0226	BH0226

Figure 1

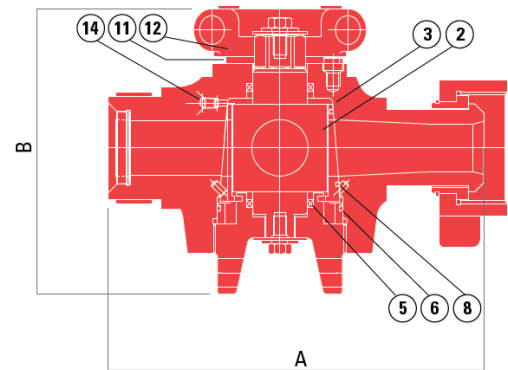


Figure 2

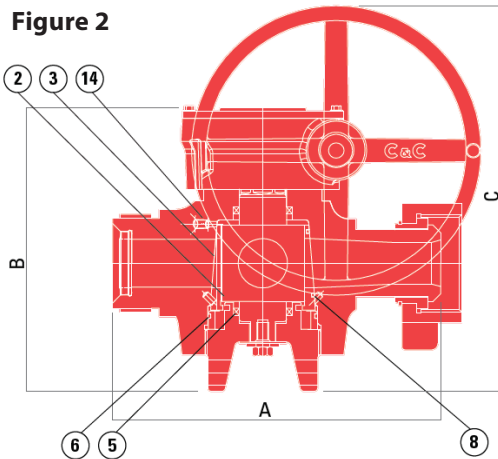
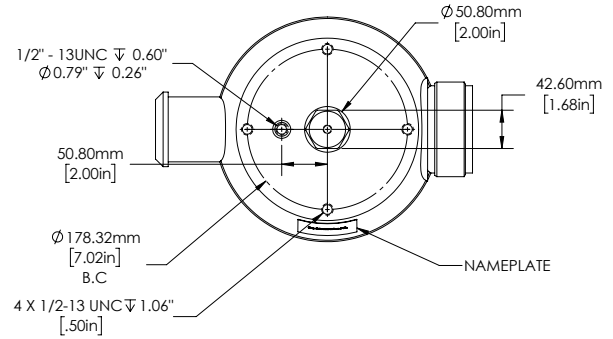


Figure #	Size	Description	Operator Type	PSI NSCWP	A	B	C	Part Number	Approx. Weight (LBS)
1	1" x 2"	Figure 1502 M x F	Manual	15,000	10.56"	9.25"	N/A	BH0023	51.8
1	2" x 2"	Threaded FNPT	Manual	10,000	8.5"	10.625"	N/A	BH0032	78.0
1	2" x 2" STD	Figure 1502 M x F	Manual	15,000	13.875"	10.625"	N/A	BH0006	97.9
1	2" x 2" NACE	Figure 1502 M x F	Manual	10,000	13.875"	10.625"	N/A	BH0109	97.9
1	3" x 3"	Figure 1502 M x F	Manual	15,000	17"	13"	N/A	BH0055M	210.0
2	3" x 3"	Figure 1502 M x F	Gear Operated	15,000	17"	15.875"	21.125"	BH0055S	312.0

Valve Torque Values

Valve Size	Working Pressure (PSI NSCWP)	Operating Torque (ft-lbs)		
		5,000 psi	10,000 psi	15,000 psi
1" x 2"	15,000	75	170	220
2" x 2"	15,000	330	450	510
3" x 3"	15,000	1,050	1,350	2,050

3" x 3" Top Works



*To actuate other sizes, valves must be drilled and tapped

Applicable Product Warnings

WARNING

- Only qualified technicians should perform maintenance on products.
- Ensure all pressure is relieved before performing any maintenance or disassembly.

WARNING

- Do not vent flammable or explosive gases through individual plug valves.
- Remove the valve from service if it is slow to open or close.

Not following these warnings could result in failure and possible personal injury, death, or property damage.

